



# LEEDS AUTISM DIAGNOSTIC SERVICE SERVICE INFORMATION LEAFLET



This **leaflet** is about the **Leeds Autism Diagnostic Service**.

This **leaflet** tells you:

**Where we are**

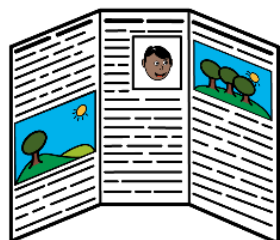
**Who we are**

About our **autism assessments**

If you **do** have **autism**

If you **do not** have **autism**

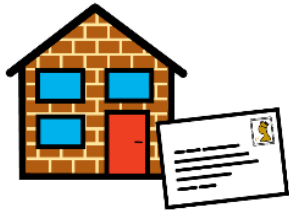
How **you** can get **involved**



You can look at this leaflet with **someone you trust**.

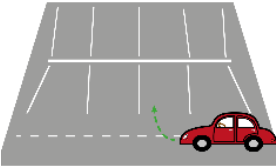


## Where we are

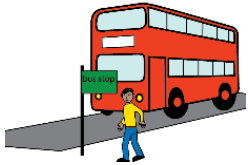


Our **address** is:

**Leeds Autism Diagnostic Service  
Aire Court  
Lingwell Grove  
Middleton  
Leeds LS10 4BS**



We have a **car park**.

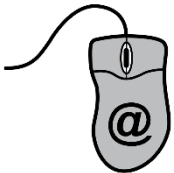


The number **13 bus** stops **near us**.



Our **telephone number** is:

**0113 855 0712**



Our **email** is:

**[lads.lypft@nhs.net](mailto:lads.lypft@nhs.net)**



Our **website** is:

**[www.leedsandyorkpft.nhs.uk/our-services/autism-diagnostic-service-lads/](http://www.leedsandyorkpft.nhs.uk/our-services/autism-diagnostic-service-lads/)**



## Who we are



**The Leeds Autism Diagnostic Service is part of the Leeds and York Partnership NHS Foundation Trust.**

We provide autism assessments to adults in Leeds.

We provide advise to health care and social care teams supporting adults with autism in Leeds.

We teach other health and social care teams about autism.



In our **team** are:

- Doctors (psychiatrists)
- Nurses
- Occupational Therapists
- Psychologist
- Speech and Language Therapist
- Clinical team manager
- Secretaries



## About our autism assessments

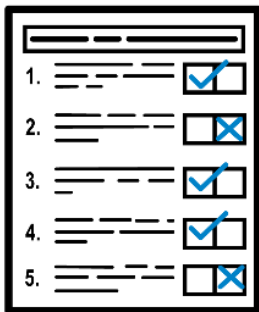
We do **autism assessments**.

These are for:

- People aged **18 years** and **older**.
- People who have a **GP** in **Leeds**.
- People who **do** have a **learning disability**.
- People who **do not** have a **learning disability**.



Who can make a referral for an assessment?



- Your **GP**
- Your **social worker**
- A **support worker**
- A **family** member
- A **carer**
- **You**

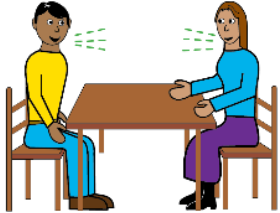
The **referral form** can be found at:

[www.leedsandyorkpft.nhs.uk/our-services/autism-diagnostic-service-lads/](http://www.leedsandyorkpft.nhs.uk/our-services/autism-diagnostic-service-lads/)

**IMPORTANT** we will **only** accept a referral if **you** give **your consent**, or in **your best interests**.



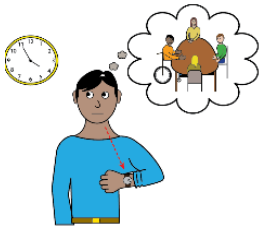
## What happens in an autism assessment?



In an **autism assessment** we will **talk** to you and **ask** you **questions**.

**Appointments** are at **Aire Court**.

Sometimes appointments are by **videocall**.



Sometimes we might need you to come to **another appointment**.



At the **next** appointment we will **ask** you some **more questions**.

We will do some **activities** with you.



## What happens in an autism assessment?



We will **ask** other **people** about you.

We might ask:

- Your **family**
- Your **carer**
- **Staff** who work with you
- **Someone** else who **knows** you well.



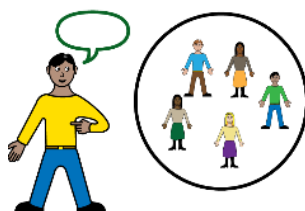
We will **look** at your old **report(s)**.

These may be from:

- **School**
- **College**
- **Speech and Language Therapy**
- **Psychology**

You might have these reports.

If you don't have these reports, we will ask your **GP** to help us get them.



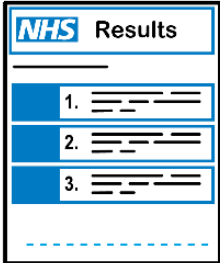
Sometimes we need to **talk** to other people in **our team** about **your assessment**.

We will **ask** what they **think**.

This **helps** us **know** if you have **autism**.



# What happens after an autism assessment

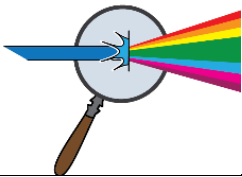


We will tell you if you **have autism** or **not**.



We will **send** you a copy of your **autism assessment report**.

# If you do have autism



We will **talk** to you about **life with autism**.



We will **talk** to you about what can **help**.



We will give you a **leaflet** about **autism**.



An illustration of a person in a blue shirt looking thoughtful, with a clock and a thought bubble containing a group of people in a meeting.	<p>We will offer you a <b>final appointment</b> with us.</p> <p>At your final appointment you can ask us <b>questions</b> about <b>life with autism</b>.</p>
An illustration showing a person with a briefcase walking away from a building towards a smaller house, symbolizing discharge.	<p><b>After your final appointment</b> you will be <b>discharged</b> from our service.</p> <p>This means you will <b>not</b> come back to our <b>service</b>.</p>

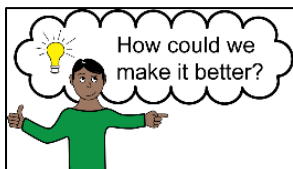
## If you **do not** have autism

An illustration of two hands, one slightly above the other, reaching towards each other.	<p>We will <b>talk</b> to you about things that might <b>help</b> you.</p>
An illustration of a person in a yellow shirt standing on a large hand that is being held up.	<p>We might <b>refer</b> you to <b>another service</b> for support.</p>
An illustration showing a person with a briefcase walking away from a building towards a smaller house, symbolizing discharge.	<p>You will be <b>discharged</b> from our service.</p> <p>This means you will <b>not</b> come back to our <b>service</b>.</p>





## How you can **get involved**



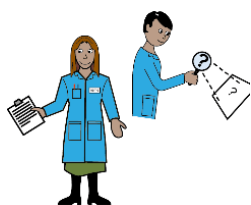
The **Leeds Autism Diagnostic Service** wants people who **use** our service to help **make it better**.



You can give us **feedback** about our service.



You might be able to help us to **train** other **staff** about autism.



You might be able to help us with our **research**.



If you **want** to get **involved**, please:

- Email [lads.lypft@nhs.net](mailto:lads.lypft@nhs.net)
- Or telephone **0113 855 0712**